

AUDUBON TRACER

Volume 2008, Issue 1

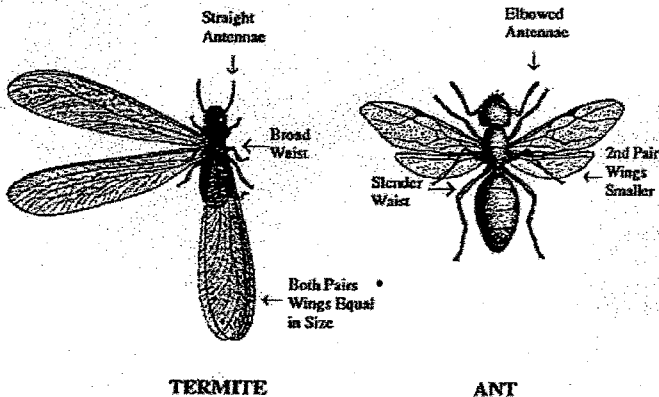
March 17, 2008

Termite swarming season is April—June

Beginning in April and ending in June, some Owners may see swarming termites or flying ants in the interior or around the outside of their units. Neither insect will cause damage to the interior of our units, but we want to make sure that the termites are not trying to start a new colony in or around our buildings.

Difference Between Swarming Termites and Flying

Ants are often difficult to tell apart. Termites have relatively straight, beadlike antennae while ants have elbowed antennae. Termites have two pair of wings (front and back) that are of almost equal length. Ants also have two pair of wings but the fore wings are much larger than the hind wings. The abdomen of the termite is broadly joined to the thorax while the abdomen



TERMITE

ANT

and thorax of the ant are joined by a narrow waist called a petiole. Queens have long wings, while secondary queens are short-winged and/or wingless. Winged reproductive termites migrate (swarm) to initiate new colonies. The flight is short and weak with the wings often breaking off in flight. The difference between swarming termites and flying ants is the wide body of the termite as opposed to the constricted or pinched body of the ant.

Termite Swarms

Termite reproduce new colonies through "swarming". The swarming termites develop during winter months. Usually in the spring during warm and humid weather, worker termites will build special tubes called "swarming castles" and prod the swarmers out for mat-

ing. Swarming typically last for around 30 minutes soon after dusk and are attracted to any sort of lighting. Outdoor and indoor lighting should kept to a minimum, with all exterior window shades being closed. Swarmers can get inside your unit through a crack as small as 1/32". Inside, swarmers are certainly a nuisance not because of the actual damage they cause, but because large numbers of winged "swarmers" periodically finding their way into your home. Although extremely disruptive, swarmers are harmless, cannot bite or carry disease and cannot damage interior wood. **Swarmers do not cause any damage.** Their purpose is to start new colonies. Indoor swarmers will die within a few hours therefore we do not recommend the use of pesticides. You should wait until they die, then you can sweep or vacuum them up. Very seldom are indoor swarmers successful in starting a new colony (termites must find sufficient moisture inside the structure).

Sometimes termites swarm inside your home just briefly, die and then you do not see them again. Some people make the mistake of thinking the termites went away or maybe the pesticide they sprayed where the swarmers were emerging solved the problem. Swarmers only emerge briefly during the right environmental (temperature, light and moisture) conditions. You may see them several times during their swarming season.

The bodies of termite swarmers are black while ant swarmers may be brown, black or red. Termite swarmers are typically much smaller than ant swarmers and have a much shorter life span out of the soil. Swarmers do not destroy wood and cause no problems outside the home. **The presence of swarming termites should be followed with a termite inspection by a professional pest control contractor.**

Our Pest Control/Termite Contractor, J & J Exterminating, is monitoring our termite baiting system regularly. We are monitoring the building slabs by looking for any mud tunnels that termites build to get into the buildings. Owners can do the same by checking their slabs around their unit.